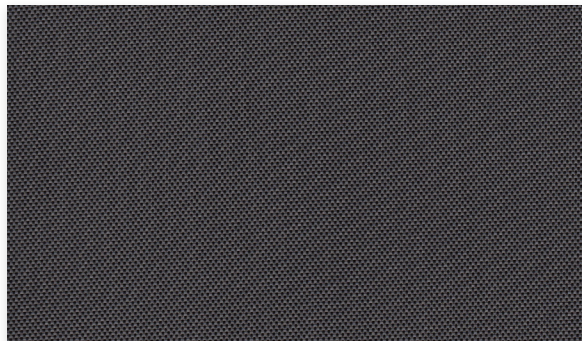


E Screen™

Conventional | 1% 3% 5% 10% openness



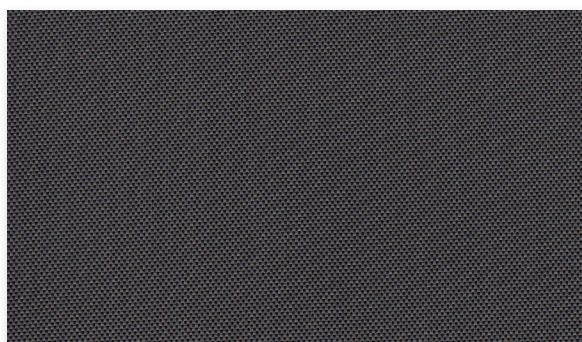
1% 030001 | Charcoal/Grey



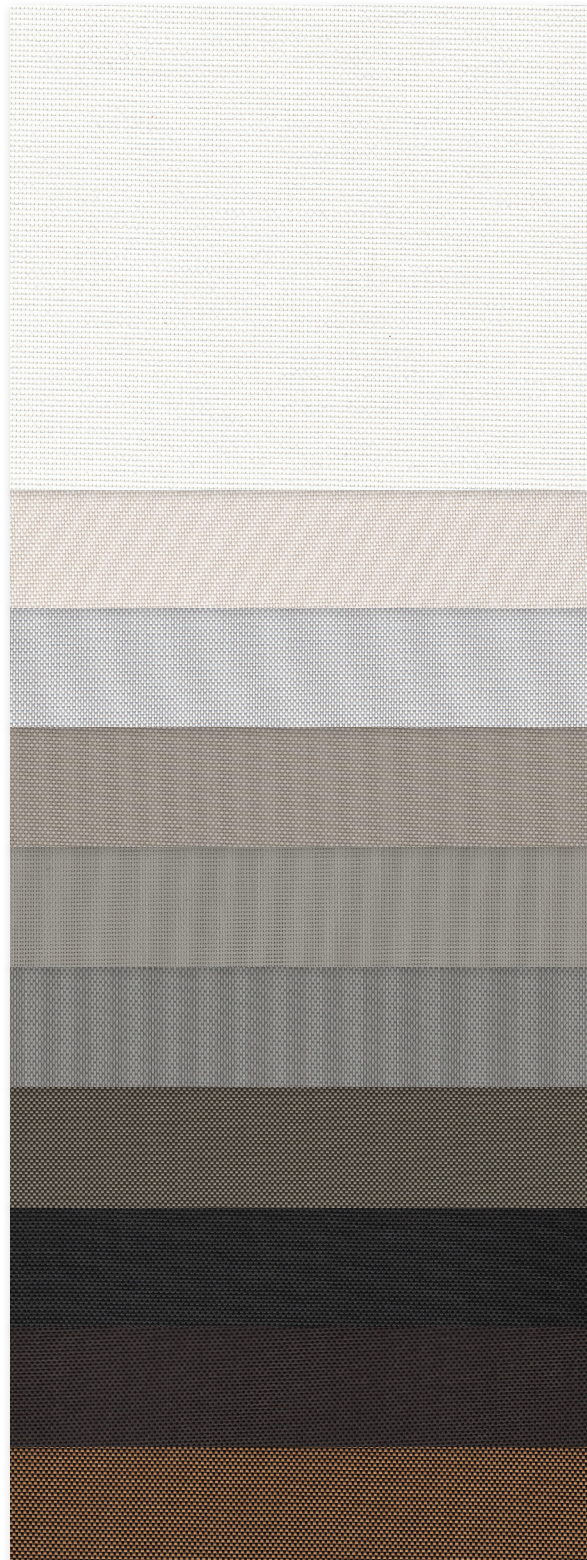
3% 030001 | Charcoal/Grey



5% 030001 | Charcoal/Grey



10% 030001 | Charcoal/Grey



002002
White/White

002020
White/Linen

002007
White/Pearl

007020
Pearl/Linen

007007
Pearl/Pearl

007001
Pearl/Grey

00M122
Charcoal/Grey-Stone

030030
Charcoal/Charcoal

030061
Charcoal/Cocoa

030071
Charcoal/Apricot

Fabrics sampled on waterfall are 5% openness.

Specifications

Item Number
Openness Factor
Composition
UV Blockage
Standard Packaging
Width
Weight

Thickness

1% 007501 | **3%** 007503 | **5%** 007505 | **10%** 007510
1%, 3%, 5% & 10%
36% Fiberglass | 64% Vinyl
Approximately 90%-99%
Rolls of 34 ly (31 lm)
78 in (200 cm), 98 in (250 cm), 122 in (310 cm)
1% 13.3 oz/yd² (452 g/m²) ±5% | **3%** 11.6 oz/yd² (393 g/m²) ±5%
5% 10.7 oz/yd² (363 g/m²) ±5% | **10%** 10.3 oz/yd² (350 g/m²) ±5%
1% 0.020 in (0.52 mm) ±5% | **3%** 0.017 in (0.43 mm) ±5%
5% 0.016 in (0.41 mm) ±5% | **10%** 0.020 in (0.52 mm) ±5%

Classifications

Fire Classifications
Bacterial & Fungal Resistance
Environment
Acoustical Performance

NFPA 701-19 TM#1, California U.S. Title 19, CAN/ULC-S109-14 Small & Large Flame Test
ASTM E2180, ASTM G21
RoHS - Lead Free, GREENGUARD Gold
1% NRC 0.50, SAA 0.50 | **3%** NRC 0.15, SAA 0.16
5% NRC 0.10, SAA 0.11 | **10%** NRC 0.05, SAA 0.06

E Screen™ 1% & 3%

ITEM	COLOR
030001	Charcoal/Grey
002002	White/White
002020	White/Linen
002007	White/Pearl
007020	Pearl/Linen
007007	Pearl/Pearl
007001	Pearl/Grey
00M122	Charcoal/Grey-Stone
030030	Charcoal/Charcoal
030061	Charcoal/Cocoa
030071	Charcoal/Apricot

E Screen™ 5% & 10%

ITEM	COLOR
030001	Charcoal/Grey
002002	White/White
002020	White/Linen
002007	White/Pearl
007020	Pearl/Linen
007007	Pearl/Pearl
007001	Pearl/Grey
00M122	Charcoal/Grey-Stone
030030	Charcoal/Charcoal
030061	Charcoal/Cocoa
030071	Charcoal/Apricot

Warranty

Disinfecting & Cleaning

Mermet Corporation
5970 N. Main Street | Cowpens, SC 29330
Ph 1.866.902.9647 | info@MermetUSA.com

MermetUSA.com



FABRIC										FABRIC + GLASS							
thermal Total Solar						optical				commercial SHGC% Improvement				residential SHGC			
Rs %		As %		Ts %		Rv %		Tv %		interior		exterior		interior		exterior	
①	③	①	③	①	③	①	③	①	③	①	③	①	③	①	③	①	③
9	10	88	85	3	5	8	10	2	5	16	16	84	84	0.58	0.60	0.11	0.11
75	73	11	11	14	16	80	78	11	13	61	58	82	82	0.25	0.28	0.12	0.14
66	63	20	21	14	16	69	66	10	12	53	47	82	82	0.31	0.34	0.13	0.14
58	52	33	38	9	10	62	56	6	8	47	42	87	84	0.34	0.38	0.10	0.11
39	39	54	48	7	13	41	42	5	11	37	34	84	79	0.42	0.44	0.11	0.15
33	32	62	59	5	9	35	34	3	8	34	32	84	82	0.45	0.47	0.10	0.13
29	27	66	63	5	10	30	27	3	8	29	26	84	79	0.47	0.50	0.11	0.14
11	13	87	80	2	7	11	13	2	6	18	18	82	79	0.54	0.55	0.11	0.14
4	5	95	91	1	4	4	5	1	4	13	13	84	84	0.60	0.62	0.10	0.11
5	7	93	89	2	4	5	7	2	3	16	13	84	84	0.59	0.62	0.11	0.10
13	18	86	75	1	7	14	18	1	7	18	18	84	82	0.56	0.57	0.09	0.12

5 Year Exterior & 10 Year Interior

Remove dust with a soft duster, cloth, sponge or low-suction vacuum. For minor stains clean with a mild dish detergent and lukewarm water using a soft brush, cloth or sponge. For tougher stains and disinfecting instructions visit MermetUSA.com.



Scan here for complete fabric resources.