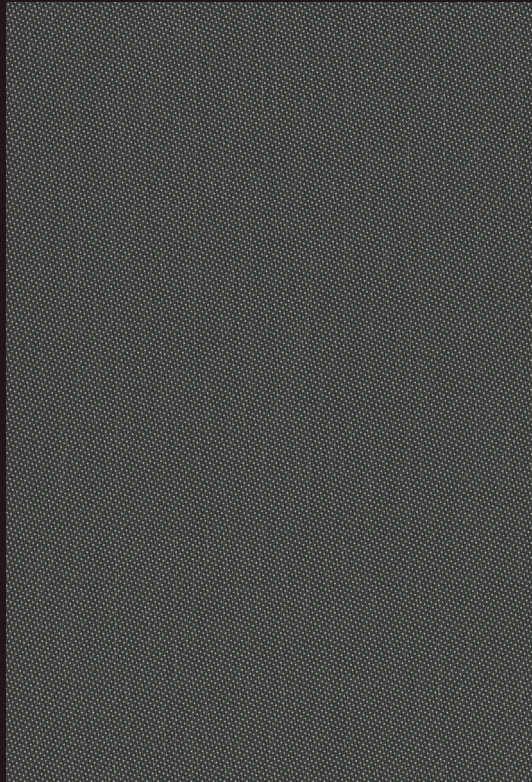


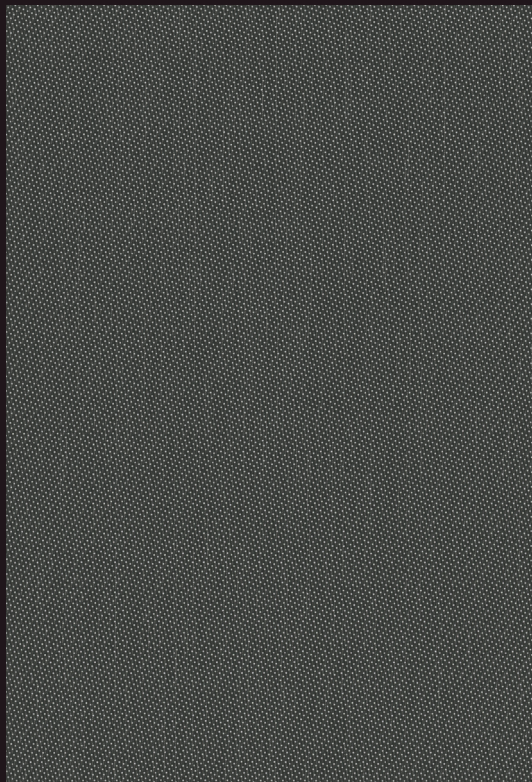
T Screen™ & T Screen™ WITH KOOLBLACK™ TECHNOLOGY

High Performance | 1% 3% openness



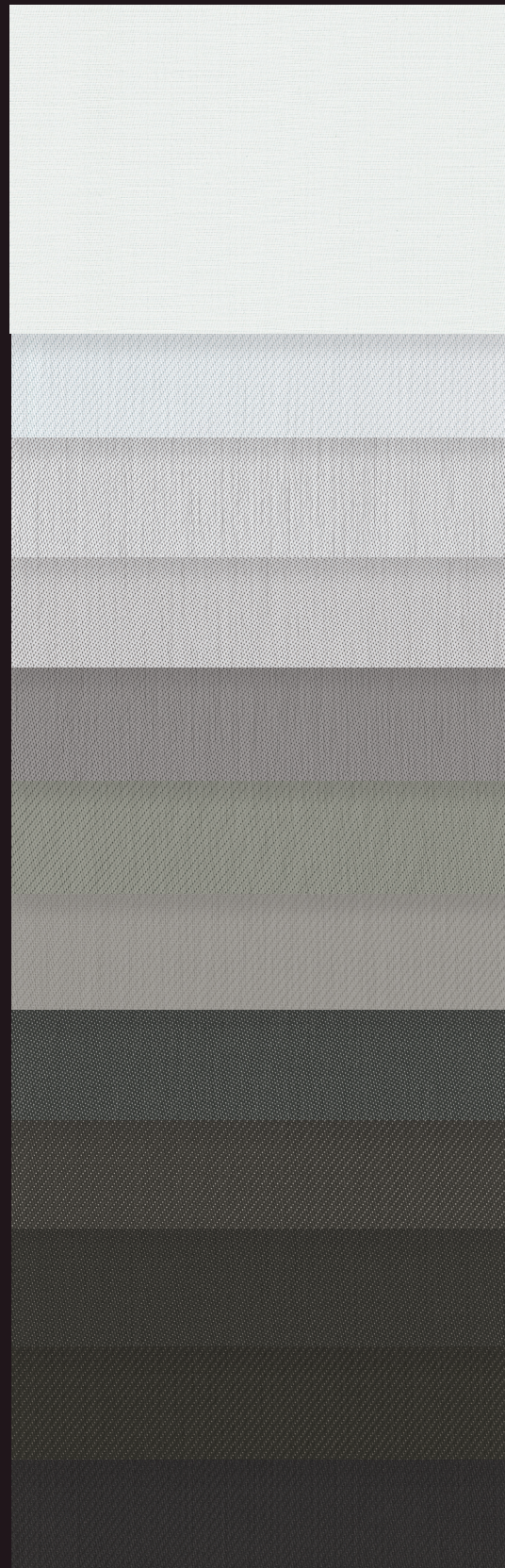
1%

030002 | Charcoal/White



3%

030002 | Charcoal/White



002002
White/White

02M228
White/
White-Steel

002001
White/Grey

002030
White/Charcoal

007030
Pearl/Charcoal

07M387
Pearl/
Charcoal-Fawn

07M287
Pearl/
Stone-Fawn

030002
Charcoal/White*

30M102
Charcoal/
Grey-White*

00M122
Charcoal/
Grey-Stone*

30M328
Charcoal/
Charcoal-Steel*

30M329
Charcoal/
Charcoal-Iron*

*Available in KOOLBLACK® Technology.

Fabrics sampled on the waterfall are 3% openness.

Fabric Specifications

Fabric Style	UV Blockage	Composition	Standard Roll Length	Warranty
Satin	Approximately 97%-99%	36% Fiberglass, 64% Vinyl	30 ly (27 lm)	5 Year Exterior 10 Year Interior

T Screen™

Available Colors

White/White	White/White-Steel	White/Grey
White/Charcoal	Pearl/Charcoal	Pearl/Charcoal-Fawn
Pearl/Stone-Fawn	Charcoal/White	Charcoal/Grey-White
Charcoal/Grey-Stone	Charcoal/Charcoal-Steel	Charcoal/Charcoal-Iron

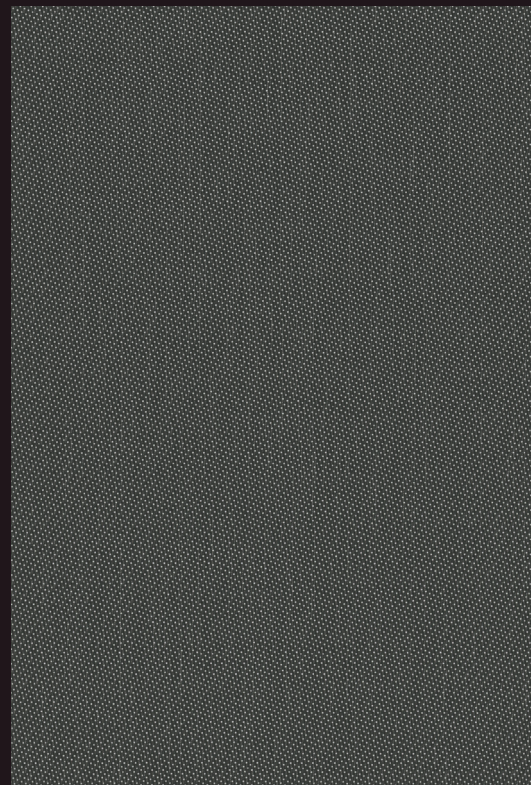
Openness	Item No.	Available Widths			Weight oz/yd ² (±5%)	Thickness inches (±5%)
		78"	98"	122"		
1%	006701	•		•	13.83	0.028
3%	006703	•		•	12.59	0.027

T Screen™ with KOOLBLACK TECHNOLOGY

Available Colors

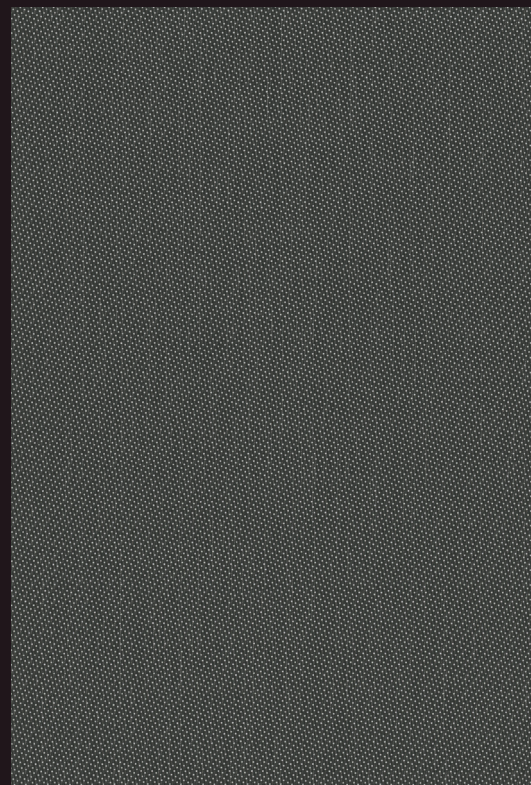
Charcoal/White	Charcoal/Grey-White	Charcoal/Grey-Stone
Charcoal/Charcoal-Steel	Charcoal/Charcoal-Iron	

Openness	Item No.	Available Widths			Weight oz/yd ² (±5%)	Thickness inches (±5%)
		78"	98"	122"		
1%	009701		•	•	13.54	0.024
3%	009703		•	•	13.27	0.029



1%

030002 | Charcoal/White



3%

030002 | Charcoal/White



Looking for fenestration data?
Scan here for complete fabric resources.

MermetUSA.com



Mermet Corporation

5970 N. Main Street
1.866.902.9647

Cowpens, SC 29330
info@MermetUSA.com

Product performance and specification data is subject to change, visit www.Mermetusa.com for the most current information

09.23.v1