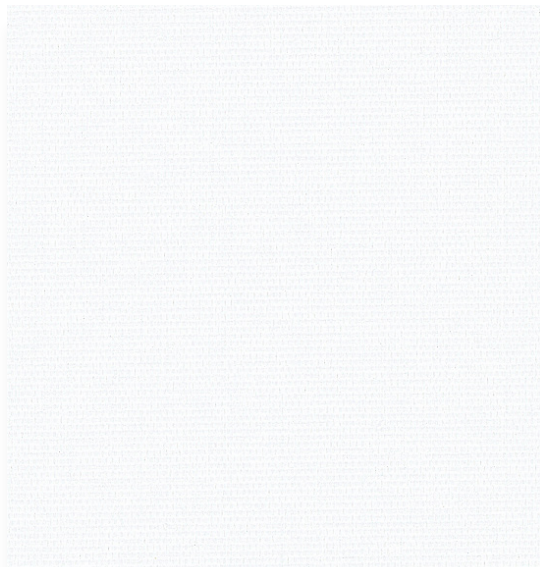
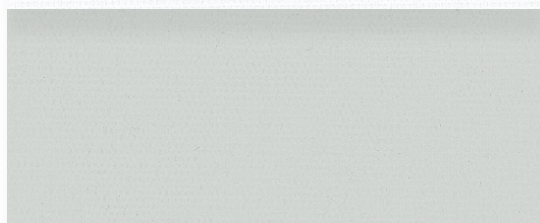


# Sparta Twilight™

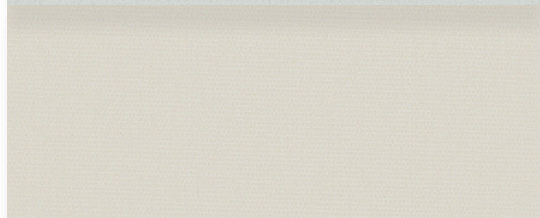
Privacy | Blackout



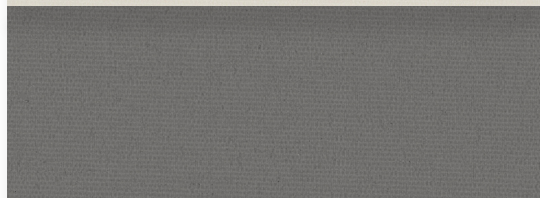
002002  
White/White



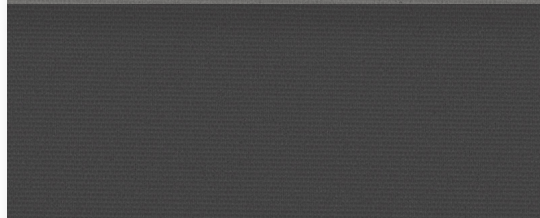
016002  
Chalk/White



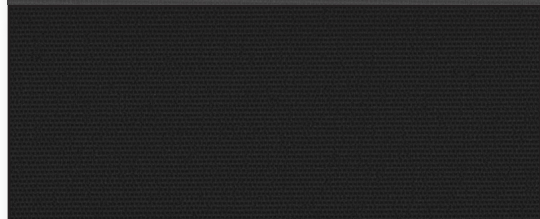
042002  
Gypsum/White



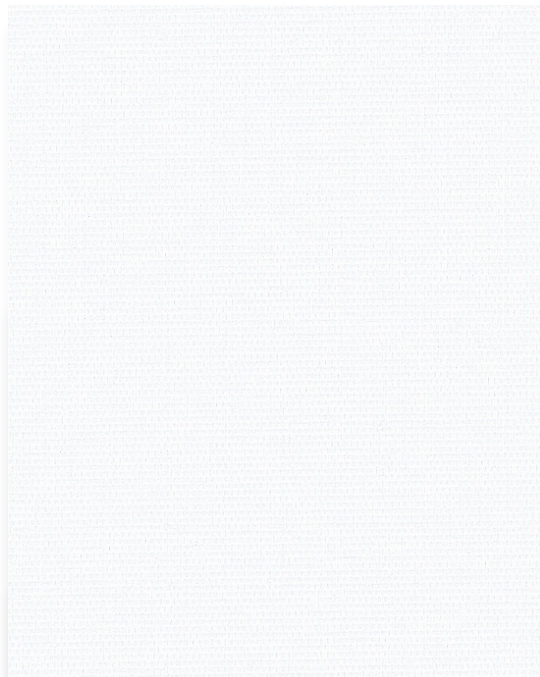
001002  
Pewter/White



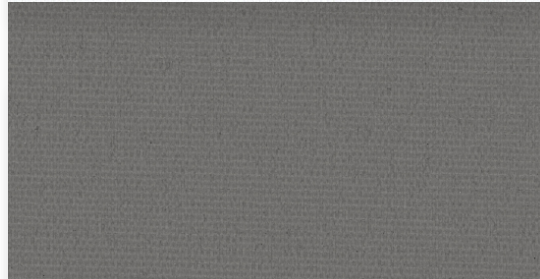
070002  
Emery/White



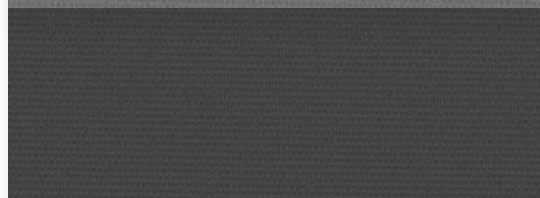
060002  
Black/White



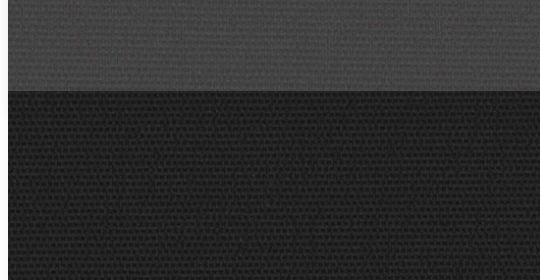
002002  
White/White



001001  
Pewter/Pewter



070070  
Emery/Emery



060060  
Black/Black

# Fabric Specifications

Fabric Style	UV Blockage	Composition	Standard Roll Length	Warranty
Blackout	Approximately 100%	33% Polyester, 67% Acrylic	33 ly (30 lm)	5 Year Interior

## Sparta Twilight™

### Available Colors

Chalk/White	Gypsum/White	Pewter/White
Emery/White	Black/White	White/White
Pewter/Pewter	Emery/Emery	Black/Black

Openness	Item No.	Available Widths			Weight oz/yd <sup>2</sup> (±5%)	Thickness inches (±5%)
		78"	98"	126"		
0% White Backing	W04942			•	9.9	0.014
0% Color Matched Backing	M04942			•	9.9	0.014



Looking for fenestration data?  
Scan here for complete fabric resources.

[MermetUSA.com](http://MermetUSA.com)



**Mermet Corporation**

5970 N. Main Street  
1.866.902.9647

Cowpens, SC 29330  
info@MermetUSA.com

Product performance and specification data is subject to change, visit [www.Mermetusa.com](http://www.Mermetusa.com) for the most current information