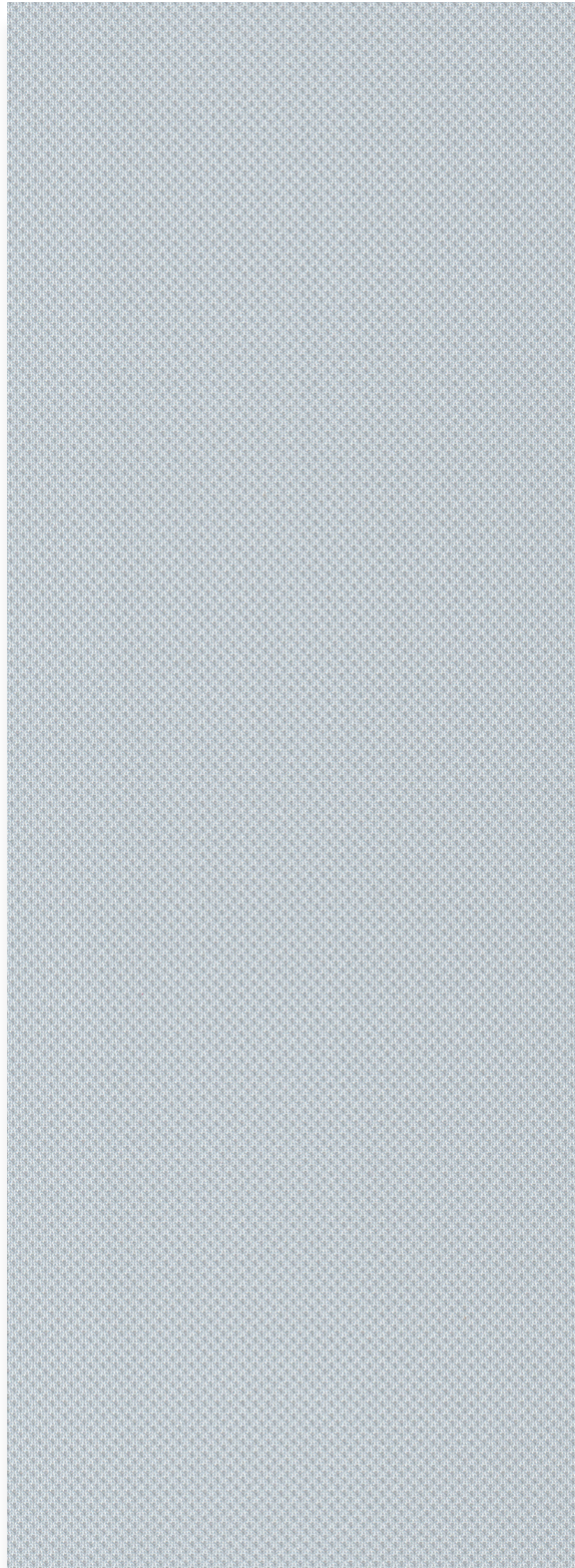
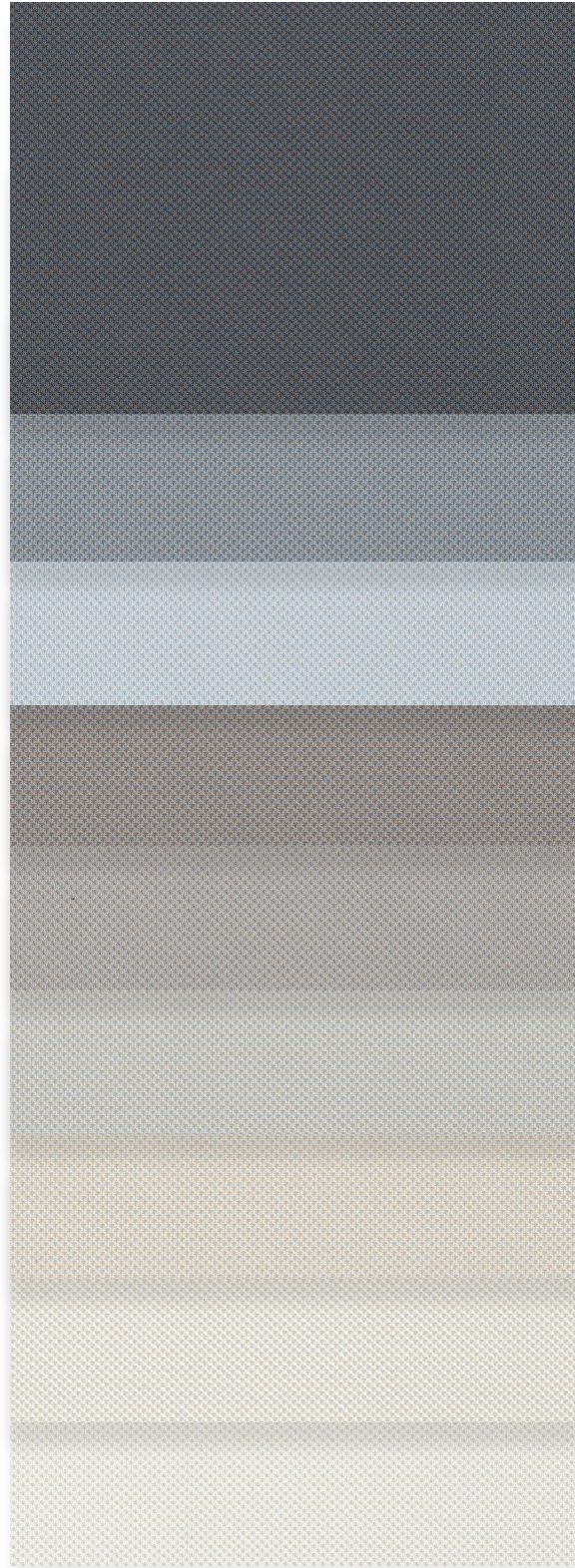


# GreenScreen Evolve<sup>®</sup>

Sustainable | 3% openness



00QS37 | Wind



00QS26  
Storm

00QS19  
Rain

00QS37  
Wind

00QS21  
Shadow

00QS22  
Shale

00QS35  
Haze

00QS38  
Natural

00QS23  
Light

00QS39  
Cloud

## Specifications

|                    |   |
|--------------------|---|
| Item Number        | 003503  |
| Product Category   | Sustainable   |
| Fabric Style       | Warp Knit   |
| Openness Factor    | 3%  |
| Composition        | 100% Polyester   78% Recycled Content               |
| UV Blockage        | Approximately 97%                                   |
| Standard Packaging | Rolls of 35 ly (32 lm)                              |
| Width              | 118 in (300 cm)                                     |
| Weight             | 8.85 oz/yd <sup>2</sup> (300 g/m <sup>2</sup> ) ±5% |
| Thickness          | 0.029 in (0.74 mm) ±5%                              |

## Classifications

|                               |   |
|-------------------------------|---|
| Fire Classifications          | NFPA 701 TM#1, California U.S. Title 19, CAN/ULC-S109 Small & Large Flame Test        |
| Bacterial & Fungal Resistance | ASTM E2180, ASTM G21  |
| Environment                   | RoHS - Lead Free, GREENGUARD Gold, Cradle to Cradle Certified - Bronze, Declare Label |
| Acoustical Performance        | NRC 0.20, SAA 0.20  |



ITEM COLOR

|        |         |
|--------|---------|
| 00QS37 | Wind    |
| 00QS26 | Storm   |
| 00QS19 | Rain    |
| 00QS21 | Shadow  |
| 00QS22 | Shale   |
| 00QS35 | Haze    |
| 00QS38 | Natural |
| 00QS23 | Light   |
| 00QS39 | Cloud   |

| Rs   % | FABRIC                           |        |    | optical |        | FABRIC + GLASS                     |                     |
|--------|----------------------------------|--------|----|---------|--------|------------------------------------|---------------------|
|        | thermal<br>Total Solar<br>As   % | Ts   % |    | Rv   %  | Tv   % | commercial<br>SHGC%<br>Improvement | residential<br>SHGC |
| 62     | 17                               | 21     | 61 | 19      | 47     | 0.34                               |                     |
| 41     | 45                               | 14     | 19 | 5       | 24     | 0.46                               |                     |
| 51     | 31                               | 18     | 38 | 11      | 34     | 0.41                               |                     |
| 47     | 32                               | 21     | 35 | 14      | 32     | 0.43                               |                     |
| 54     | 25                               | 21     | 46 | 16      | 37     | 0.39                               |                     |
| 61     | 17                               | 22     | 58 | 19      | 45     | 0.35                               |                     |
| 63     | 14                               | 23     | 63 | 22      | 47     | 0.34                               |                     |
| 66     | 11                               | 23     | 68 | 23      | 50     | 0.32                               |                     |
| 69     | 8                                | 23     | 71 | 23      | 53     | 0.30                               |                     |

## Warranty

5 Year Interior

## Disinfecting & Cleaning

Remove dust with a soft duster, cloth, sponge or low-suction vacuum. For minor stains clean with a mild dish detergent and lukewarm water using a soft brush, cloth or sponge. For tougher stains and disinfecting instructions visit [MermetUSA.com](https://www.MermetUSA.com).

Mermet Corporation  
5970 N. Main Street | Cowpens, SC 29330  
Ph 1.866.902.9647 | [info@MermetUSA.com](mailto:info@MermetUSA.com)

[MermetUSA.com](https://www.MermetUSA.com)



Scan here for complete fabric resources.