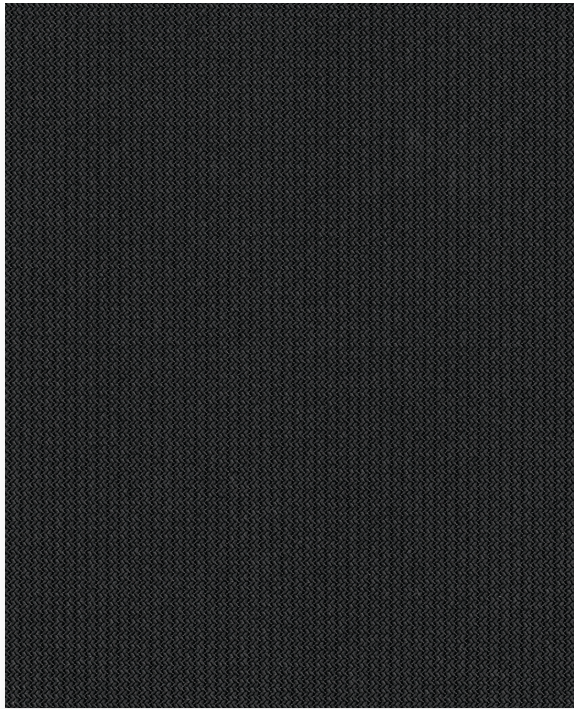


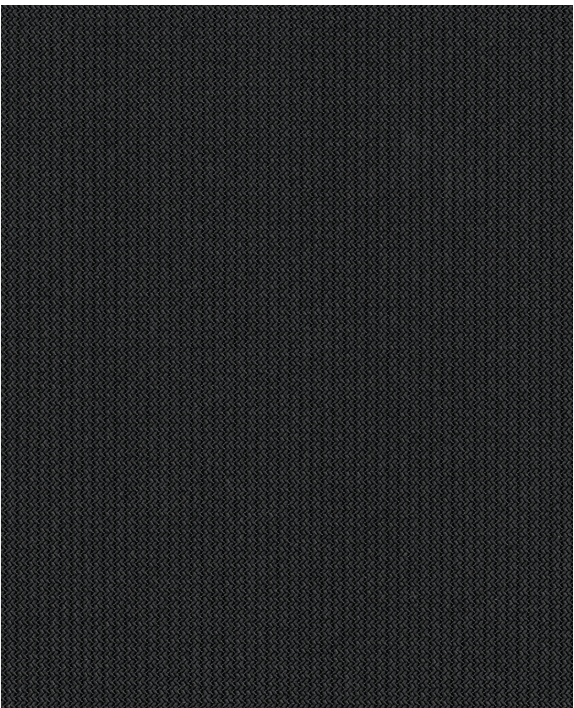
GreenScreen Revive®

Sustainable | 1% 5% openness



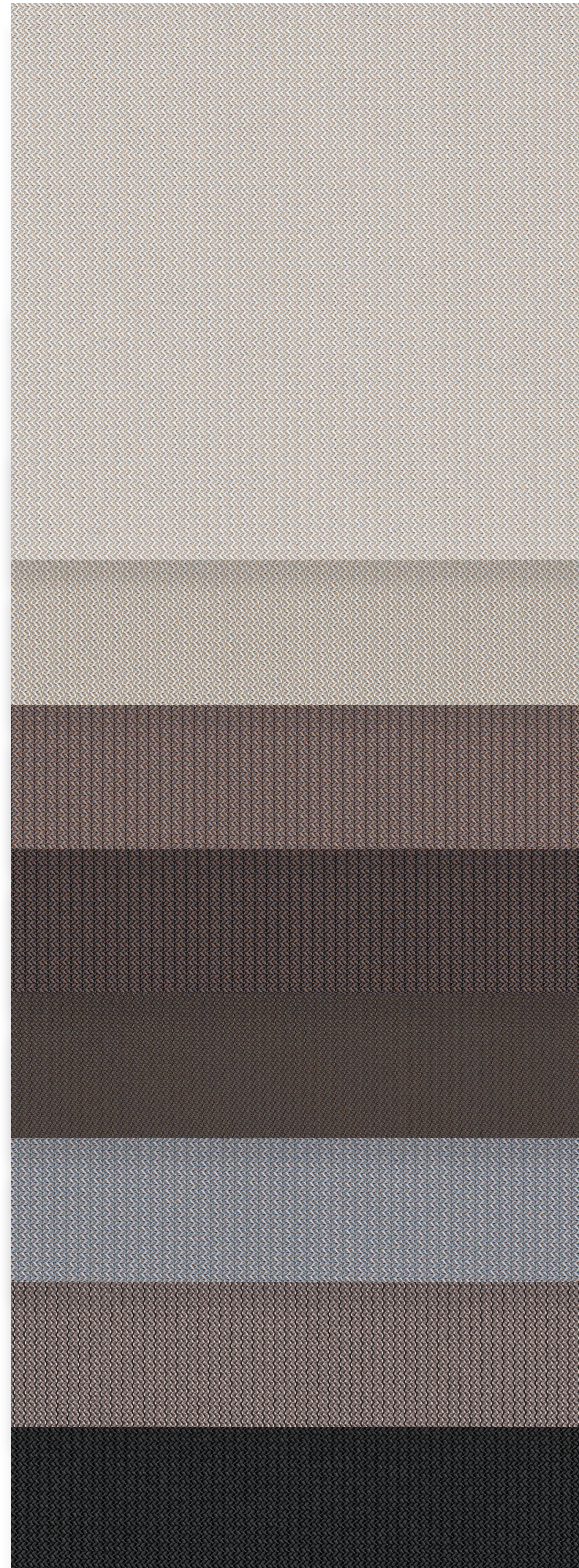
1%

A00030 | Onyx



5%

A00030 | Onyx



000010
Sand

000020
Linen

000055
Mushroom

000071
Suede

000015
Dusk

000022
Stone

000001
Pewter

A00030
Onyx

Fabrics sampled on waterfall are 5% openness.



Sun Control Textiles™

Specifications

Item Number
Product Category
Fabric Style
Openness Factor
Composition
UV Blockage
Standard Packaging
Width
Weight
Thickness

1% 002501 | 5% 002505
Sustainable
Warp Knit
1% & 5%
100% Polyester | 89% Recycled Content
Approximately 95%-99%
Rolls of 50 ly (46 lm)
118 in (300 cm)
1% 5.87 oz/yd² (199 g/m²) ±5% | 5% 5.01 oz/yd² (170 g/m²) ±5%
1% 0.0109 in (0.49 mm) ±5% | 5% 0.017 in (0.44 mm) ±5%

Classifications

Fire Classifications

NFPA 701 TM#1, California U.S. Title 19,
CAN/ULC-S109 Small & Large Flame Test
ASTM G21

Bacterial & Fungal Resistance
Environment
Acoustical Performance

RoHS - Lead Free, GREENGUARD Gold, Declare Label, Cradle to Cradle - Certified Bronze
1% NRC 0.20, SAA 0.22 | 5% NRC 0.15, SAA 0.14



ITEM COLOR

A00030 Onyx

000022 Stone

000001 Pewter

000015 Dusk

000071 Suede

000055 Mushroom

000020 Linen

000010 Sand

ITEM	COLOR	FABRIC								FABRIC + GLASS					
		thermal Total Solar				optical				commercial SHGC% Improvement		residential SHGC			
		Rs %	As %	Ts %		Rv %	Tv %								
		1 5	1 5	1 5		1 5	1 5	1 5		1 5	1 5	1 5	1 5		
A00030	Onyx	34	31	49	47	17	22	11	10	5	9	18	16	0.51	0.56
000022	Stone	52	49	24	24	24	27	44	43	17	20	34	32	0.42	0.45
000001	Pewter	43	37	38	37	19	26	25	23	8	14	24	21	0.46	0.52
000015	Dusk	36	31	50	47	14	22	11	10	2	8	18	16	0.50	0.56
000071	Suede	39	35	42	40	19	25	20	18	7	13	21	18	0.48	0.53
000055	Mushroom	46	42	34	31	20	27	32	31	10	18	29	24	0.45	0.49
000020	Linen	58	52	17	16	25	32	55	50	20	28	42	34	0.38	0.44
000010	Sand	61	54	13	11	26	35	60	54	23	33	45	37	0.36	0.43

Warranty

5 Year Interior

Disinfecting & Cleaning

Remove dust with a soft duster, cloth, sponge or low-suction vacuum. For minor stains clean with a mild dish detergent and lukewarm water using a soft brush, cloth or sponge. For tougher stains and disinfecting instructions visit [MermetUSA.com](https://www.MermetUSA.com).

Mermet Corporation
5970 N. Main Street | Cowpens, SC 29330
Ph 1.866.902.9647 | info@MermetUSA.com

[MermetUSA.com](https://www.MermetUSA.com)



Scan here for complete fabric resources.