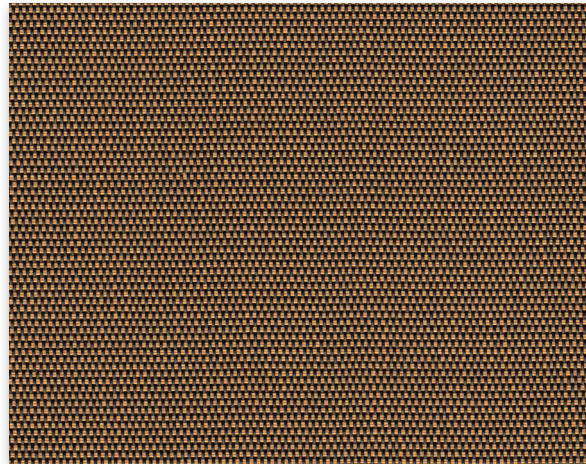
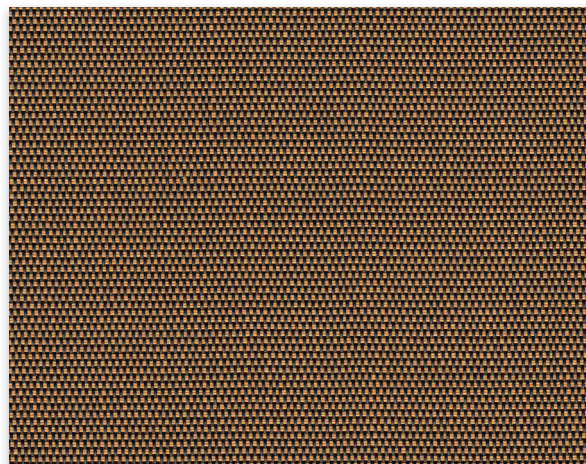


# M Screen™

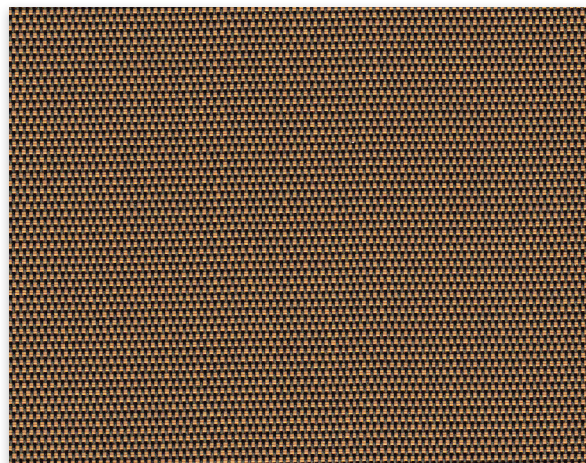
Conventional | 1% 3% 5% openness



1% 030071 | Charcoal/Apricot



3% 030071 | Charcoal/Apricot



5% 030071 | Charcoal/Apricot



002002 White/White



002007 White/Pearl



007020 Pearl/Linen



007007 Pearl/Pearl



030001 Charcoal/Grey



030030 Charcoal/Charcoal



002022 White/Stone



002020 White/Linen



020022 Linen/Stone



00M166 Linen/Sable-Cocoa



030010 Charcoal/Sable



030061 Charcoal/Cocoa



Fabrics sampled on waterfall are 5% openness.



## Specifications

Item Number	1% 008501   3% 008503   5% 008505
Openness Factor	1%, 3% & 5%
Composition	36% Fiberglass   64% Vinyl
UV Blockage	Approximately 95%-99%
Standard Packaging	Rolls of 30 ly (27 lm)
Width	78 in (200 cm), 98 in (250 cm), 122 in (310 cm)
Weight	1% 13.12 oz/yd <sup>2</sup> (445 g/m <sup>2</sup> ) ±5%   3% 12.27 oz/yd <sup>2</sup> (432 g/m <sup>2</sup> ) ±5%   5% 11.3 oz/yd <sup>2</sup> (384 g/m <sup>2</sup> ) ±5%
Thickness	1% 0.022 in (0.56 mm) ±5%   3% 0.022 in (0.55 mm) ±5%   5% 0.022 in (0.55 mm) ±5%

## Classifications

Fire Classifications	NFPA 701-10 TM#1, California U.S. Title 19 CAN/ULC-S109-03 Small & Large Flame Test
Bacterial & Fungal Resistance	ASTM E2180, ASTM G21
Environment	RoHS - Lead Free, GREENGUARD Gold
Acoustical Performance	1% NRC: 0.50, SAA: 0.47   3% NRC: 0.25, SAA: 0.24   5% NRC: 0.15, SAA: 0.16

## M Screen™

ITEM	COLOR	FABRIC															FABRIC + GLASS								
		thermal Total Solar									optical						commercial SHGC% Improvement			residential SHGC					
		Rs   %			As   %			Ts   %			Rv   %		Tv   %				interior			interior					
		1	3	5	1	3	5	1	3	5	1	3	5	1	3	5	1	3	5	1	3	5			
030071	Charcoal/Apricot	11	13	13	86	82	80	3	5	7	11	14	13	2	5	7	18	18	16	0.55	0.59	0.60			
002002	White/White	76	71	71	9	11	10	15	18	19	81	76	75	12	16	16	63	55	55	0.24	0.29	0.30			
002007	White/Pearl	59	54	52	32	36	33	9	10	15	64	58	56	7	8	12	50	45	42	0.32	0.37	0.40			
007020	Pearl/Linen	36	40	39	56	49	49	8	11	12	38	42	41	5	8	9	34	34	32	0.44	0.46	0.47			
007007	Pearl/Pearl	32	34	33	63	59	57	5	7	10	34	36	35	4	5	7	26	29	29	0.45	0.48	0.50			
030001	Charcoal/Grey	7	8	8	91	90	86	2	2	6	7	8	8	2	2	5	18	16	13	0.56	0.61	0.63			
030030	Charcoal/Charcoal	4	4	4	95	93	93	1	3	3	4	4	4	1	3	3	16	13	11	0.57	0.63	0.64			
002022	White/Stone	67	62	61	15	17	18	18	21	21	71	66	65	16	18	18	55	47	47	0.30	0.35	0.36			
002020	White/Linen	67	64	61	18	21	20	15	15	19	72	67	64	12	11	15	55	50	47	0.29	0.33	0.36			
020022	Linen/Stone	50	51	50	29	28	28	21	21	22	53	53	52	18	16	18	42	39	37	0.39	0.41	0.42			
00M166	Linen/Sable-Coca	39	35	36	50	56	52	11	9	12	41	37	37	9	7	10	37	29	29	0.43	0.48	0.49			
030010	Charcoal/Sable	10	12	13	87	84	81	3	4	6	10	13	13	2	4	5	18	18	16	0.55	0.59	0.60			
030061	Charcoal/Cocoa	5	5	5	93	92	90	2	3	5	5	5	5	2	3	4	16	13	13	0.57	0.62	0.64			

## Warranty

5 Year Exterior & 10 Year Interior

## Disinfecting & Cleaning

Remove dust with a soft duster, cloth, sponge or low-suction vacuum. For minor stains clean with a mild dish detergent and lukewarm water using a soft brush, cloth or sponge. For tougher stains and disinfecting instructions visit [MermetUSA.com](http://MermetUSA.com).

Mermet Corporation  
5970 N. Main Street | Cowpens, SC 29330  
Ph 1.866.902.9647 | [info@MermetUSA.com](mailto:info@MermetUSA.com)

[MermetUSA.com](http://MermetUSA.com)



Scan here for complete fabric resources.